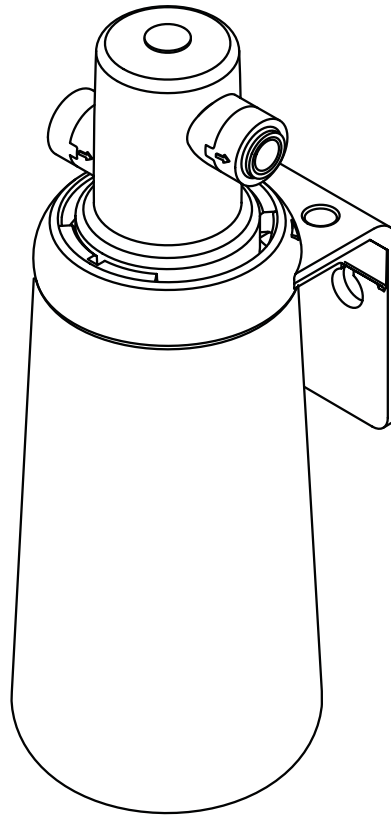




Water Filtration Products



Water Filtration Systems **Installation and Instruction Manual**

CunoOCS Water Filter Systems Installation and Operating Instructions

Specifications

Inlet Size: 3/8" John Guest Fitting
Outlet Size: 3/8" John Guest Fitting
Temperature Range: 40-100°F (4.4-38°C)
Pressure Range: 25-125 psi (172-862 kPa)
Dimensions - 1,500 Gallon Styles:
4.2"W x 8.7"H (10.7cm x 22.1cm)
Dimensions - 3,500 Gallon Styles:
4.2"W x 10.6"H (10.7cm x 26.9cm)

Parts Included

Filter Cartridge, Quick Connect Fittings, System
Head/Bracket Assembly
Vent Tubing - 2 ft. (0.6 m)

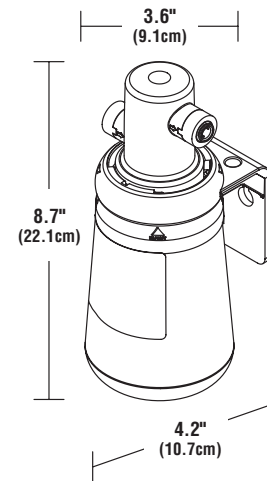
Installation Precautions

Warning: Do not use with water that is microbiologically unsafe or of unknown quality without adequate disinfection before or after the system. Systems certified for cyst reduction may be used on disinfected waters that may contain filterable cysts.

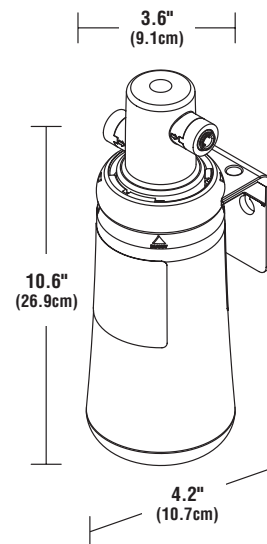
Caution: System must be protected from freezing. Drain filter when room temperature drops below 40°F (4.4°C).

Caution: Do not install on hot water line. Maximum temperature is 100°F (38°C).

- Do not use torch or other high temperature sources near filter or plastic cartridge.
- Do not install near electric wires or water pipes that will be in the path of the drill when selecting the position to mount bracket.
- Do not install in direct sunlight.
- Allow minimum of 2" (5 cm) clear space under filter to facilitate cartridge change.
- Mount filter in such a position as to prevent it from being struck by other items.
- Installation must comply with existing state or local plumbing codes.



1,500 Gallon Models



3,500 Gallon Models

Figure 1.A

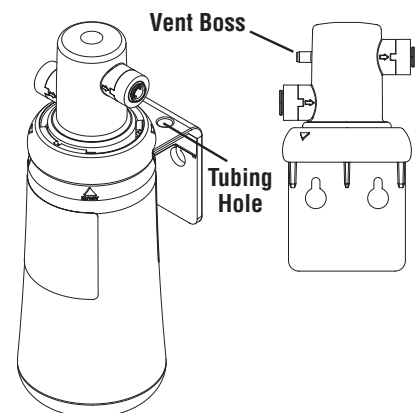


Figure 1.B

System Installation

1. Mount System

Determine mounting location

Warning: Before drilling mounting holes, locate any hidden electrical wires or plumbing behind the mounting surface. Note adjacent equipment which may interfere with system fastening screws.

- A. Fasten mounting bracket to mounting surface (screws not included).
Note: 2" (5 cm) free space underneath system required to change filter.
- B. Remove the cap from cartridge. Inspect the cartridge for any damage.
- C. Make sure the o-rings are present and positioned correctly in grooves. Moisten the o-rings with food grade lubricant.
- D. Connect the replacement cartridge to head/bracket assembly. Align tabs with head/bracket assembly and push up until cartridge stops, then rotate 1/4 turn to the right to secure.
- E. Attach vinyl vent tubing (provided) to vent boss (Fig. 1.B) by pushing the tube onto the boss until it is snug.
- F. Run tubing from vent boss through one of the tubing holes in bracket. Run tubing to drain or bucket during cartridge changeout.

2. Cold Water Supply

Warning: Make sure cold water supply valve is turned off prior to installation.

Note: A proper length of 3/8" O.D. polyethylene or soft copper tubing is required for installation (not included). Installation must comply with existing state and local plumbing codes.

Note: Additional fittings may be required.

Note: Arrange tubing so that there are no sharp bends. Leave some "play" in the tubing for ease of servicing, then cut tubing to the desired length. Shorter tubing lengths ensure better flow rates.

3. Connect System

- A. Your filter system connects directly to the equipment via 3/8" O.D. polyethylene or soft copper tubing. The filter system's inlet and outlet connections are equipped with user-friendly "quick connect" push-in fittings. Refer to Figure 2.B.

4. Test System

- A. Open cold water supply valve.
- B. The system will pressurize. Check for leaks. If any leaks are present, refer to troubleshooting section.

5. Flush Filter

- A. Make sure cold water supply is turned on.
- B. Run water through the filter to flush in accordance with Performance Data Sheet or Flush Instruction Card. Any air left in the system may temporarily cause the water to be cloudy.
- C. Your system is now ready for service.

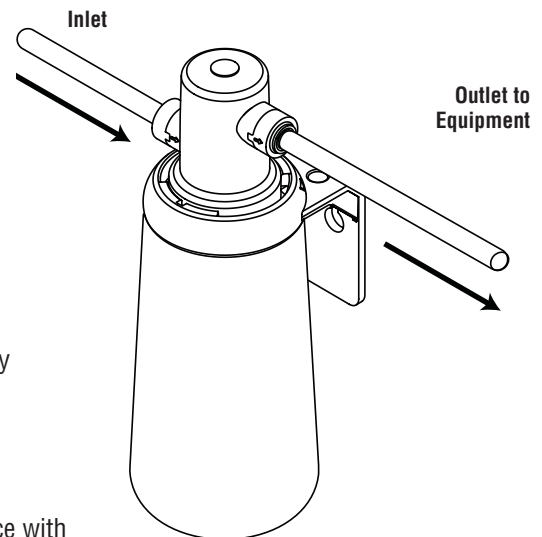


Figure 2.A

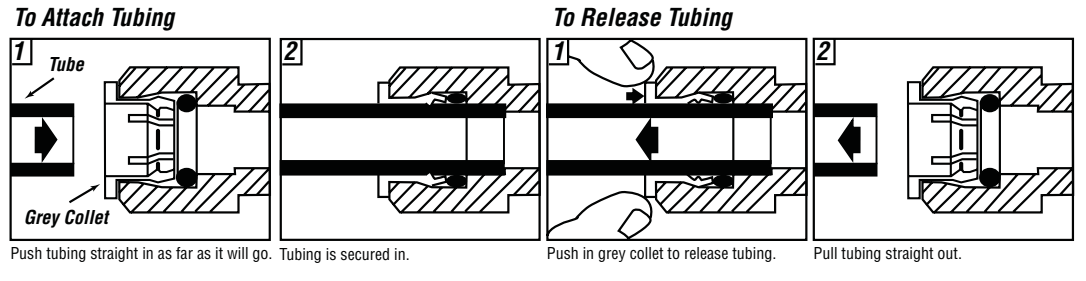
Figure 2.B

This product is outfitted with user friendly 'Push In' connectors. Proper use of the connectors is shown in the diagrams.

It is most important that the tubing selected for use with these connectors be of high quality, exact size and roundness, and with no surface nicks or scratches. If it is necessary to cut the tubing, use a plastic tubing cutter or sharp razor knife. Make a clean square cut.

Should a leak occur at a 'Push-In' connector, the cause is usually defective tubing.

- To Fix:
- Relieve pressure
 - Release tubing
 - Cut off at least 1/4" from end
 - Reattach tubing
 - Confirm connection is leak free



Troubleshooting Guide

Water leaks at quick connect fittings

Push tubing in as far as it will go. If leaking continues, shut off cold water supply and remove water line by pushing in on the connector collar while pulling the tubing away. Inspect tubing for cracks. If tubing is cracked, simply cut that portion away and re-insert tubing into quick connect fitting.

Water does not flow from the filter

Check to see if the original water supply valve is open, allowing water to flow to the filter. If water still does not flow, make sure the filter cartridge is turned to the right as far as it will go. Also, check for crimps or sharp bends in tubing. Check maintenance schedule for cartridge changeout.

Water appears cloudy or air comes out of filter faucet

Flush filter in accordance with the Performance Data Sheet or Flush Instruction Card to remove any carbon fines or trapped air in the filter and water lines. Longer flushing may be required to eliminate air bubbles completely.



CUNO Incorporated
a 3M Company
400 Research Parkway
Meriden, CT 06450, USA
Toll Free: 1-888-218-CUNO
Worldwide: 203-237-5541
Fax: 203-238-8701
www.cuno.com

3M is a trademark of 3M Company.