


SCOTSMAN

AIR & WATER, MODULAR CONTOUR CUBERS



CME256

VOLUME PRODUCTION • 24 HOUR

 Certified & rated in accordance with ARI standard 810-95	Air-Cooled		Water-Cooled	
	70°/50° lbs./kg.	ARI 90°/70° lbs./kg.	70°/50° lbs./kg.	ARI 90°/70° lbs./kg.
CME256-1	307/139	240/109	320/145	260/118
CME256-32	307/139	240/109	—	—

VALUE THE DIFFERENCE OF CM³ ICE MACHINES:

- CM³ series offers the lowest lifetime operating costs based on lower water and electrical usage. Combine that with a competitive purchase price and the best warranty in the industry and you have the lowest lifetime ownership cost. Period.
- AutoIQ™ Control System monitors and controls the ice machines' functions to ensure consistent ice production and reduce operating costs.
- CM³ Evaporator is a hot tin dipped, molecularly bonded plate that has been field tested and proven 99.4% reliable over 5 years.
- Rust-free Polyethylene Base and Food Zone is insulated with 1-1/2" of foam which keeps water and food zone cool to reduce operating costs and is backed by a Lifetime Rust-free Warranty.
- Contemporary styling and stainless steel finish make the CM³ a perfect addition to any operation.

WARRANTY *See your dealer for complete warranty details.*

- Limited Lifetime Rust Free Warranty on Food Zone
- 3 years parts and labor on all components.
- 5 years parts and labor on the CME evaporator.
- 5 years parts on the compressor and condensor.

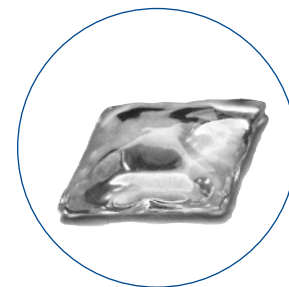
BIN OPTIONS:




BIN: HTB250



BIN: HTB350



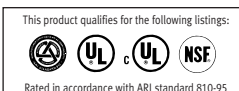
APPROX. CUBE SIZE:
1³/₈" x 1³/₈" x 5/₈" THICK

SCOTSMAN MODULAR BINS					
 Certified & rated in accordance with ARI standard 820-95					
Model Number	Dimensions W"xD"xH"	ARI Bin Capacity	Application Capacity	Finish*	Ship Weight lbs./kg.
HTB250	30 x 31.5 x 22.5	190 LBS.	250 LBS.	HTB	80/36
HTB350	30 x 31.5 x 29.5	270 LBS.	350 LBS.	HTB	90/41
HTB555	30 x 34.5 x 44.5	420 LBS.	535 LBS.	HTB	110/50
BH550	30 x 31.5 x 44	410 LBS.	520 LBS.	SS	140/64

* (HTB) Linear Low Density Polyethylene—Grey color.
(SS) Stainless Steel with Polyethylene liner.

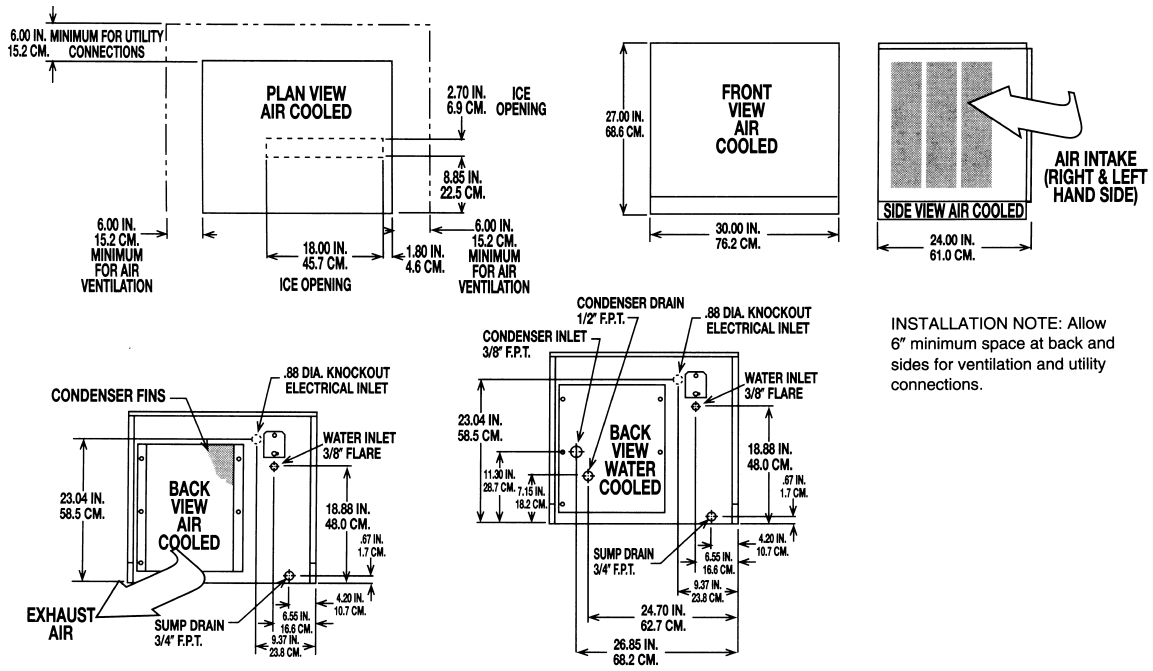


Scotsman is proud to announce that we are ISO-9001:2000 Certified





Ice Machine Specifications



All models: Dimensions: W x D x H Unit: 30" x 24" x 27" Shipping Carton: 33 1/2" x 28" x 32 1/2"

Model Number	Condenser Unit	Basic Electrical Volts/Hz/Phase	Max. Fuse Size or HACR Circuit Breaker	Comp. HP	Circuit Wires	Min. Circuit Ampacity	BTU's per hour	Shipping Weight lbs./kg.	Power Consumption KWH/100 lbs. 90°/70° F	Water Usage Gallons/100 lbs. 90°/70° F	
										Potable	Condenser
CME256AS-1E	AIR	115/60/1	20	1/2	2	16	5,100	185/84	9.0	16.0	-
CME256AS-32E	AIR	208-230/60/1	15	1/2	2	7.9	5,100	185/84	7.6	16.0	-
CME256WS-1E	WATER	115/60/1	20	1/2	2	16	5,100	195/88	7.6	16.0	180

All units with Stainless Steel finish.
 Refrigerant: R-404A.

OPTIONS:
 Stacking Kit: Number KSCME6-30 (CME256, CME506, or CME806, CME656 on CME256, CME506, CME656, or CME806).

Scotsman's ice machines are not designed for outdoor installations. Scotsman remote condensers are designed for outdoor installations.

Machine requires voltage indicated on rating name plate. Failures caused by improper voltage are not considered factory defects. Extended periods of operation at temperatures exceeding limitations constitutes misuse under the terms of Scotsman Manufacturer's Limited Warranty, resulting in a loss of warranty coverage. Specifications and design are subject to change without notice.

Consult Your Local SCOTSMAN Representative At:

IMPORTANT OPERATING REQUIREMENTS:

	Minimum	Maximum
Air Temperatures	50°F (10°C)	100°F (37.7°C)
Water Temperatures	40°F (4.4°C)	100°F (37.7°C)
Remote Cond. Temps	-20°F (-28.9°C)	120°F (48.9°C)
Water Pressures	20 PSIG	80 PSIG
Electrical Voltage	-5%	+10%

YOU'LL VALUE THE DIFFERENCE™

775 Corporate Woods Parkway • Vernon Hills, IL 60061 • 1-800-SCOTSMAN • Fax: (847) 913-9844
 Visit our website at: www.scotsman-ice.com • E-mail: customer.service@scotsman-ice.com

