

# N0922 – 900 lb Nugget Ice Machine

## Prodigy® Nugget Ice Machine



Shown on beverage dispenser.

### Features

Scotsman Nugget Ice™ was created with the consumer in mind. It's soft, chewable form make it a favorite for all types of beverages. The ice displaces more liquid than cubed ice, lowering syrup costs per cup.

Prodigy Nugget Ice Machines are highly efficient, using up to 50% less water and 15% less energy than cube ice machines.

AutoAlert™ indicator lights constantly communicate about operating status and actually signal your staff when it's time to descale, sanitize and more - making upkeep practically foolproof.

Preventative maintenance is simpler than ever with easily-removed panels allowing clear access to internal components and a diagnostic code display insuring the right fix the first time. Reusable air filter is easily removable from the outside.

Maximize capacity by placing 2 units next to each other side by side on a 48" bin, bringing ice production levels up to 3,000 lbs. per 24 hours.

An optional advanced feature Smart-Board™ provides NAFEM data protocol and additional operational data that can be displayed on-screen or transmitted remotely, resulting in early alert and fast diagnosis of operating issues.

An optional Vari-Smart™ ultrasonic ice level control sensor allows you the flexibility to program ice levels, for up to 7 days, keeping just the right amount of freshly made ice in the bin.

Industry leading 3 year parts and labor warranty.

### 24 Hour Volume Production

| Air Cooled                      |              |                                 | Remote Cooled                   |              |                                 | Water Cooled                    |              |                                 |
|---------------------------------|--------------|---------------------------------|---------------------------------|--------------|---------------------------------|---------------------------------|--------------|---------------------------------|
| 70°F/21°C<br>50°F/10°C<br>lb/kg | Air<br>Water | 90°F/32°C<br>70°F/21°C<br>lb/kg | 70°F/21°C<br>50°F/10°C<br>lb/kg | Air<br>Water | 90°F/32°C<br>70°F/21°C<br>lb/kg | 70°F/21°C<br>50°F/10°C<br>lb/kg | Air<br>Water | 90°F/32°C<br>70°F/21°C<br>lb/kg |
| 956/438                         |              | 765/345                         | 1044/474                        |              | 835/379                         | 1094/496                        |              | 875/397                         |



### Modular Bin & Dispenser Options

| Model Number | Dimensions W" x D" x H" | Application Capacity lb/kg | AHRI Certified Bin Capacity lb/kg | Finish | Ship Weight lb/kg |
|--------------|-------------------------|----------------------------|-----------------------------------|--------|-------------------|
| B530P*       | 30 x 34 x 44**          | 536/244                    | 420/191                           | Poly   | 150/68            |
| B530S*       | 30 x 34 x 44**          | 536/244                    | 420/191                           | SS     | 110/50            |
| B842S*       | 42 x 34 x 44**          | 778/353                    | 610/277                           | SS     | 185/84            |
| B948S*       | 48 x 34 x 44**          | 893/406                    | 700/319                           | SS     | 220/100           |
| ID200*       | 30 x 30 x 35.625        | 200/91                     |                                   | SS     | 195/89            |
| ID250*       | 30 x 30 x 39.625        | 250/114                    |                                   | SS     | 200/91            |

\*Contact Scotsman for bin top requirements. \*\*Add 6" H for bin legs



N0922 shown side by side on B948S bin

### Nugget Ice



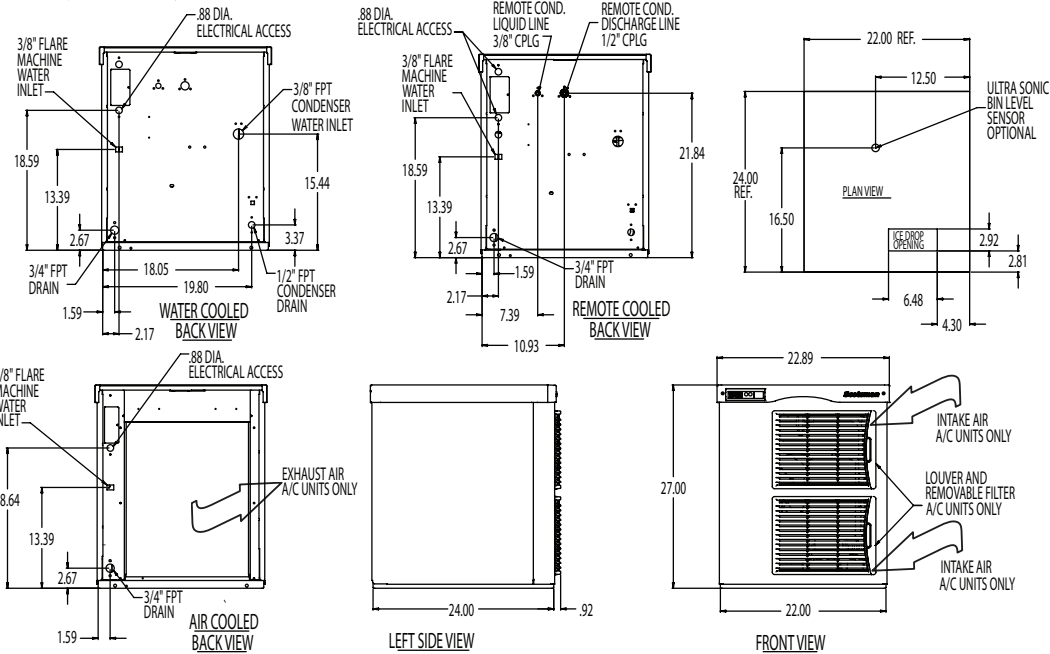
The Original Chewable Ice™!  
Soft ice ideal for fountain beverages and blended drinks.

### Warranty

- 3 years parts and labor on all components.
- 5 years parts on the compressor.

Warranty valid in North, South & Central America. Contact factory for warranty in other regions.

\* Installation Note: Allow 6" minimum space at back for utility connections.



## Specifications

| Model Number | Condenser Unit | Basic Electrical Volts/Hz/Phase | Max. Fuse Size or HACR Circuit Breaker (amps) | Circuit Wires | Min. Circuit Ampacity | Energy Consumption kWh/100 lb (45.4 kg) 90°F(32°C)/70°F(21°C) | Water Usage Gallons/100 lb (liters/45.4 kg) |                                 |
|--------------|----------------|---------------------------------|---|---------------|-----------------------|---|---|---------------------------------|
|              |                |                                 |   |               |                       |   | Potable 90°F(32°C)/70°F(21°C)               | Condenser 90°F(32°C)/70°F(21°C) |
| N0922A-32    | Air            | 208-230/60/1                    | 15  | 2             | 12.5                  | 4.7   | 12.0/45.5                                   | -                               |
| N0922R-32    | Remote         | 208-230/60/1                    | 15  | 2             | 12.3                  | 4.0   | 12.0/45.5                                   | -                               |
| N0922W-32    | Water          | 208-230/60/1                    | 15  | 2             | 11.3                  | 3.7   | 12.0/45.5                                   | 125/473.9                       |

## All Models

Dimensions (W x D x H):  
Unit: **Individual**  
22.9" x 24" x 27"  
(58.2 x 61.0 x 68.6 cm)

**Side by Side**  
45.8" x 24" x 27"  
(116.3 x 61.0 x 68.6 cm)

Shipping Carton:  
25.5" x 27.5" x 32.5"  
(64.8 x 69.9 x 82.6 cm)

Shipping Weight:  
210 lb/95 kg

BTU per hour:  
10,500

Refrigerant:  
R-404A

## Accessories

| Model Number | Description   |
|--------------|---|
| KVS          | Vari-Smart™ Ice Level Control - Program ice bin levels to match ice needs.          |
| KSBU         | Smart-Board™ Advanced Control - Use additional operational data for fast diagnosis. |
| KSBU-N       | Smart-Board™ Advanced Control with Network - Network capable.                       |
| KPFSA227     | Side Air Flow Kit for 27" Tall Prodigy Flaker and Nugget                            |
| ERC311-1A    | Remote Condenser for N0922R, 115V/60/1  |
| RTE10        | Line set, Precharged, R-404A, 10 ft.  |
| RTE25        | Line set, Precharged, R-404A, 25 ft.  |
| RTE40        | Line set, Precharged, R-404A, 40 ft.  |
| RTE75        | Line set, Precharged, R-404A-75 ft  |
| KPAS         | Prodigy Advanced Sustainability kit- Includes KVS and KSBU-N                        |

\* Scotsman recommends all ice machines have water filtration. See Scotsman Sanitation Matrix for details.

## Operating Requirements

|                           | Minimum           | Maximum           |
|---------------------------|-------------------|-------------------|
| <b>Air Temperatures</b>   | 50°F (10°C)       | 100°F (38°C)      |
| <b>Water Temperatures</b> | 40°F (4.4°C)      | 100°F (38°C)      |
| <b>Remote Cond. Temps</b> | -20°F (-29°C)     | 120°F (49°C)      |
| <b>Water Pressures</b>    | 20 PSIG (1.4 bar) | 80 PSIG (5.5 bar) |
| <b>Electrical Voltage</b> | -10%              | +10%              |

Specifications and design are subject to change without notice.

Scotsman Ice Systems • 775 Corporate Woods Parkway • Vernon Hills, IL 60061

1-800-SCOTSMAN

Fax: 847-913-9844

E-mail: customer.relations@scotsman-ice.com

www.scotsman-ice.com

© 2013 Scotsman Ice Systems.

SIS-SS-PRD-N0922  
01-13